

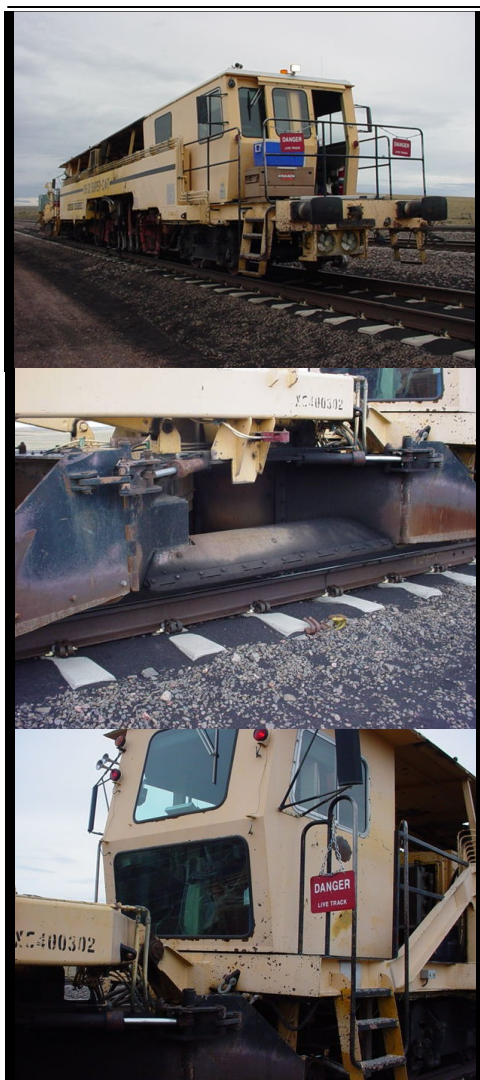


FCM Rail Ltd.

15173 North Road
Fenton, MI 48430
810-714-4626
Fax 810-714-4680

Manufacturer	Model	Asset ID
Plasser	Tamper (Super CAT)	300

Serial #	1894
Year	1993
Engine	Detroit 8V92 Engine



Tamper (Super CAT)

This high production dual tie tamping machine is equipped with two 16-tool, non-synchronous tamping heads with vibratory hydraulic squeeze system mounted on a self-propelled satellite frame. The 09-32 CAT. is standard equipped with fully automatic, computer controlled (AGGS) lifting, leveling and lining systems. Tamping cycle: automatic, semi-automatic or manually controlled. Failsafe brake shoe brake system. Two, two axle trucks for safe, high speed travel. Sufficient illumination for night work, horn.

Fully enclosed, heated, air conditioned, sound insulated cab with defroster system mounted on rubber springs for operator and instrument protection. Retractable sun screens for windows and two fully adjustable seats with arm and head rests for operator comfort. The controls are fully automatic with manual override and are solenoid controlled. Front mounted, fully enclosed, heated travel cab with fully adjustable seat and intercom system for rear cab communication. Maximum travel speed is 50 mph alone or in a "MDZ" type consist along with a Plasser Dynamic Track Stabilizer and a Plasser High Performance Ballast Profiling Machine.

Tamper (Super CAT) Specifications

Length: 64' 7"

Width: 9' 10"

Height: 11' 10"

Weight: 140,000lb

Centerpin Distance: 45'

Wheel Diameter: 28"

Engine Power: 475 HP

Travel Speed: 50 mph