

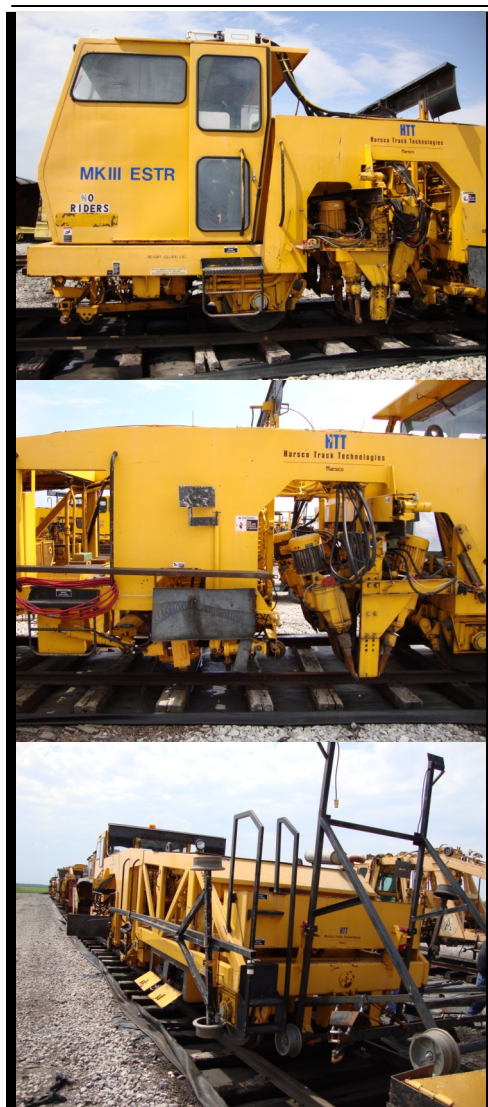


FCM Rail Ltd.

15173 North Road
Fenton, MI 48430
810-714-4626
Fax 810-714-4680

Manufacturer	Model	Asset ID
Harsco	Mark III Tamper	808

Serial #	3580472
Year	1999
Engine	G.M. 4-71T Turbocharged diesel, 160·hp @ 1,600·rpm.

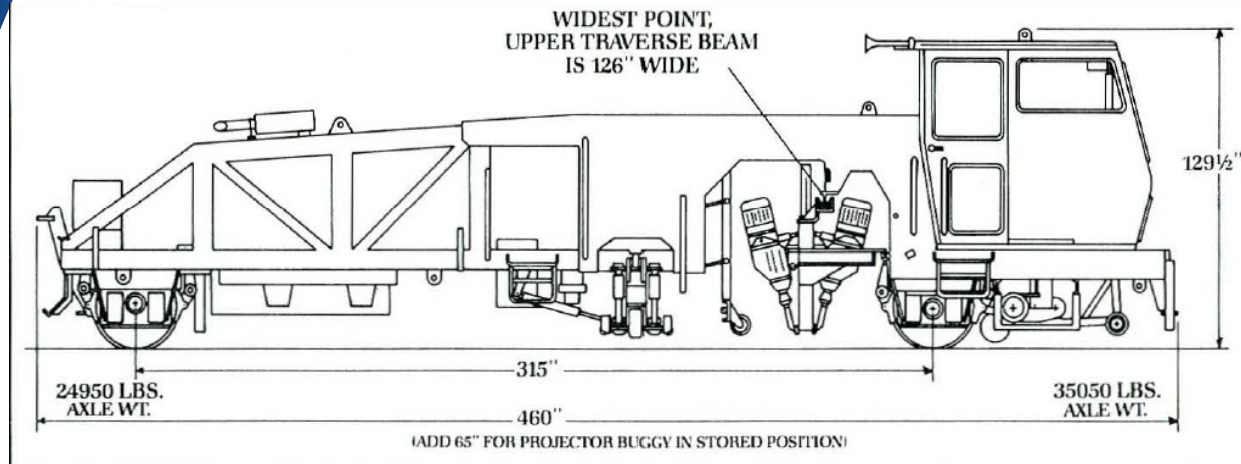


Mark III Tamper

The Fairmont Tamper Mark III performs fast, accurate, raising, lining and tamping of track. The Mark III's high quality components, automated operation, and electronic controls assure accurate and reliable performance. A Combo Rail Clamp enhances machine productivity by switching from production to switch lifting with the flip of a switch. The Combo Clamp lifts from the ball of the rail during production tamping and from the base of the rail in switch tamping. Synchronized tamping, lifting and lining occur automatically. Traversing work heads enable tamping of the entire switch area.

Four powerful, self lubricating, electro-mechanically vibrators provide 3,200 vibrations-per-minute and positive displacement panning action to liberate the ballast. This same panning action assures a rapid uniform locking of the ballast materials and, combined with the controlled hydraulic squeeze, results in a fast setting up of the ballast section under the tie for a solid uniform support for the track.

Mark III Specifications



MAIN FRAME: Welded steel construction

WHEELS & AXLES: 30-in. (762-mm) cast steel (AAR Profile) wheels with two solid forged steel axles.

SUSPENSION: Trunion-mounted front axle and fixed rear axle with elastomer shock pads at each wheel.

BRAKES: Air-operated tread-type shoe brakes on all four wheels. Spring applied, air released parking/emergency brake for automatic brake actuation in case of air pressure loss.

DRIVE TRAIN: 2-wheel drive, hydraulically-driven 4-speed transmission, chain-driven rear axle.

ENGINE: G.M. 4-71T turbocharged Diesel, 160-hp @ 1,600-rpm.

HYDRAULIC SYSTEM: Two double pumps, operating pressure 2,100-psi (14,479.5-kPa). A single pump is added when equipped with 4-wheel drive option.

AIR SYSTEM: 24-CFM engine-driven compressor.

ELECTRICAL SYSTEM: A 30-kw direct-coupled generator produces 127-VAC at 53.3-Hz to power the vibrator motors, A 12-VDC system operates auxiliary

lights and controls. The machine's sequence functions and logic systems utilize CMOS logic technology. Subassemblies are burned-in to assure quality. A self-contained trouble-shooting panel facilitates check-out of electrical components.

CAB: Comfortable, completely enclosed cab is mounting on the mainframe. It provides the operator with excellent visibility while working and travelling. Features acrylic windows, front and rear windshield wipers, heater, defroster, and interior lighting. All controls are within easy reach of the operator.

TAMPING UNITS: Four heavy-duty vibrators drive 16 abrasion-resistant tamping tools. The electro-mechanical vibrators vibrate at 53-Hz frequency (3,200-V.P.M.) and have a positive displacement of 3/8-in. (9.5-mm). Traversing workheads tamp entire switch area.

LEVELLING SYSTEM: Fairmont Tamper Delta System with infra-red light beams controls level and superelevation.

LINING SYSTEMS: Fairmont Tamper Auto-Graphliner, Graphliner, Laser, Compu-Liner.

COMBO CLAMP LIFT SYSTEM: Single rail clamp lifts from the ball of rail during production work or from the base of the rail where required in switches.

FLUID CAPACITIES

Hydraulic Tank	140-gal.(US) (530-L)
Fuel Tank	153-gal.(US) (579-L)

DIMENSIONS

Length	38.3-ft.(11.67-m)
Length (With projector buggy stored)	43.75-ft.(13.33-m)
Width	10.5-ft.(3,200-mm)
Height	10.5-ft.(3,200-mm)
Wheelbase	26.25-ft.(8-m)
Track Gage	56.5-in.(1,435-mm) standard

WEIGHT

Standard Operating Weight 65,000-lb.(29,484-kg) Actual weight of a specific machine may vary according to sales groups applied.

GENERAL PERFORMANCE

Max. Travel Speed 30-mph(48.2-km/h)